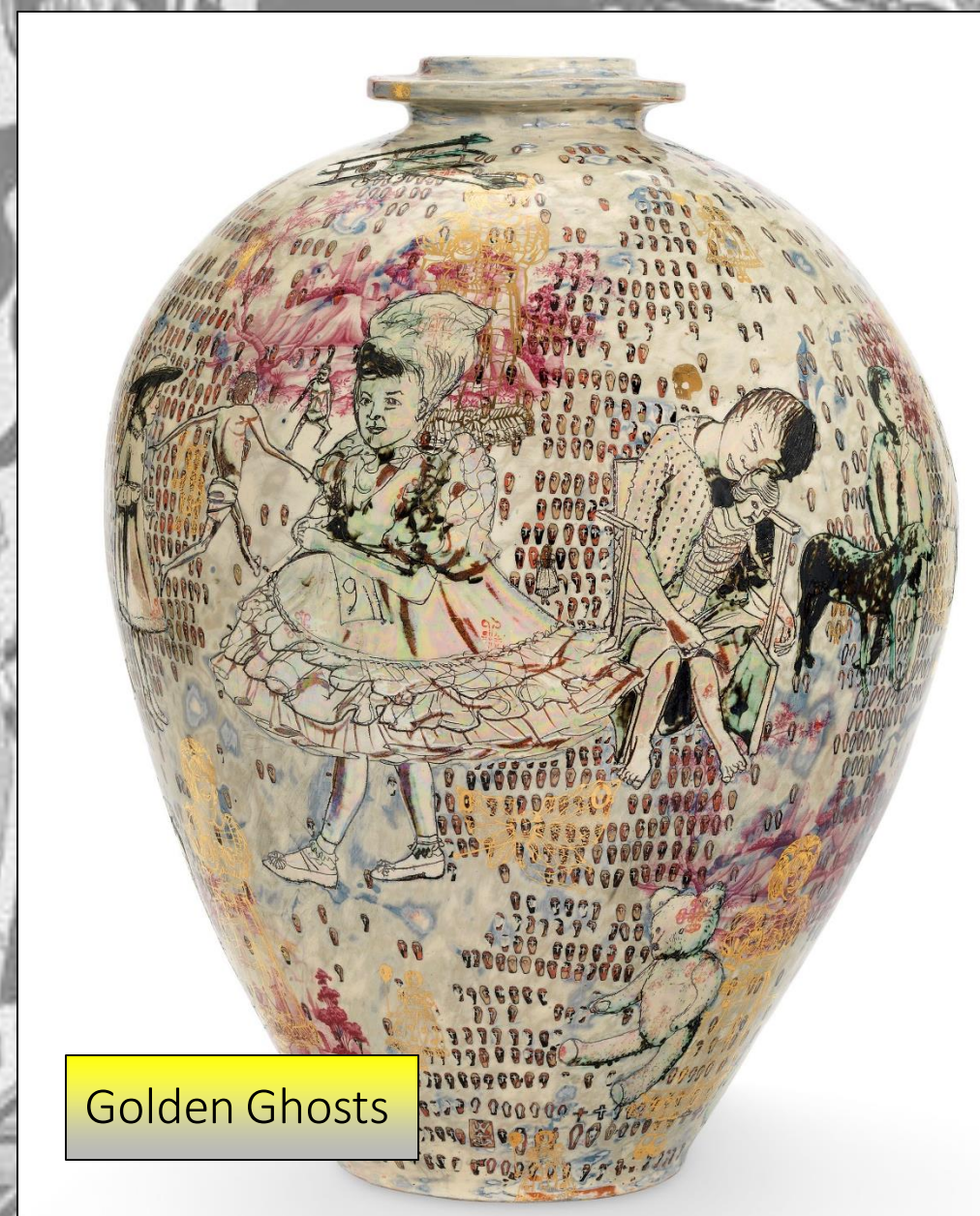


Old to New with Grayson Perry





Unhappy expressions on the little girls' faces in *Golden Ghosts* contrast sharply with the idyllic country cottages stenciled in the background. Perry often uses found images to create a mood or a tension – the exceptionally sad image of the seated girl is that of a child affected by the Chernobyl Nuclear Power Station disaster. This evocative work hints at a familiarity with psychotherapy, made at a time when Perry was coming to terms with his own unhappy past. Perry's transvestite alter ego, Claire, appears outlined in gold as the ghost in the title, dressed in the elaborate embroidered *Coming Out Dress*, made for a performance in 2000



Golden Ghosts



Vintage French Faience Ha
Painted Vase



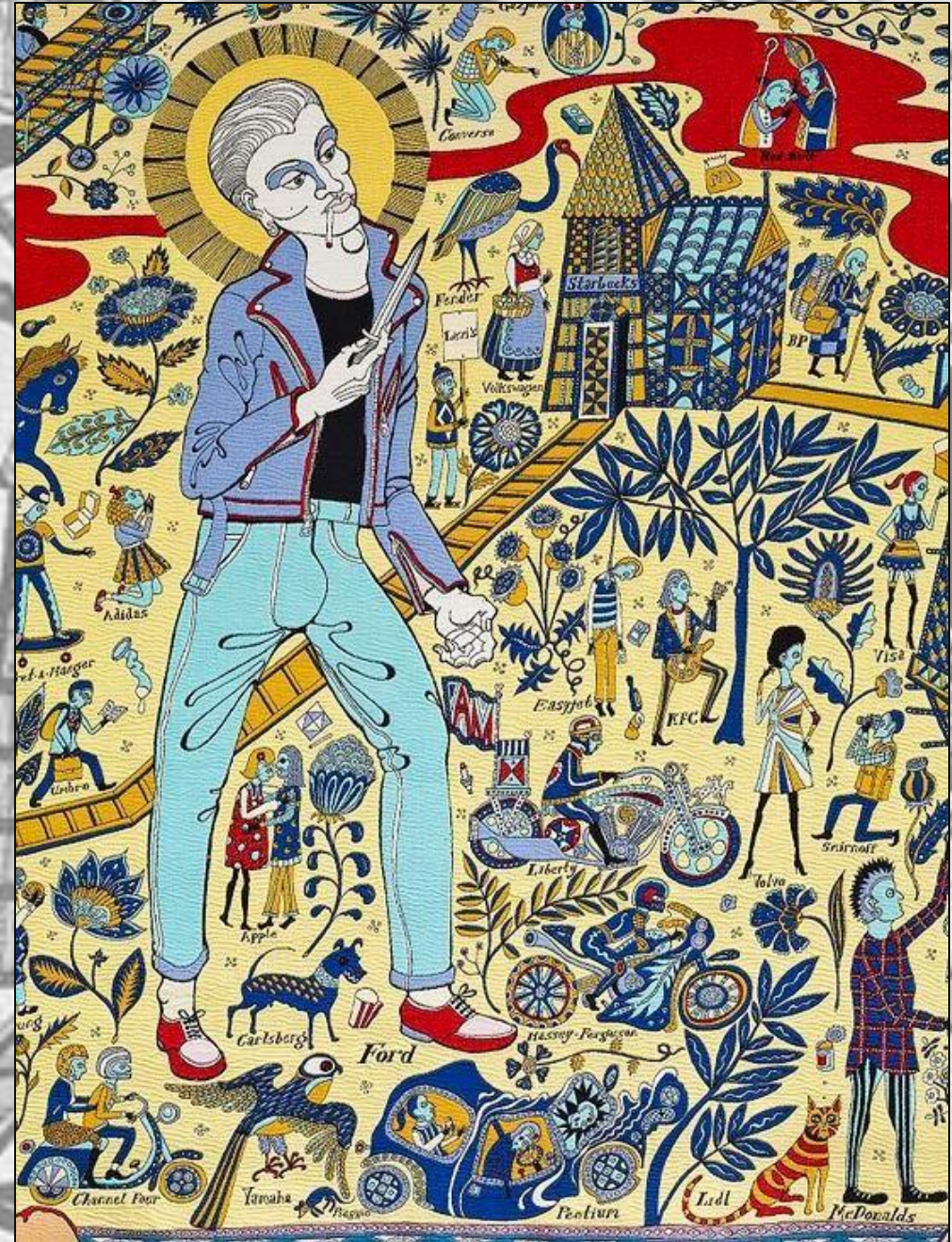
Japanese Satsuma vase,
large vase, hand painted
Japanese vase.

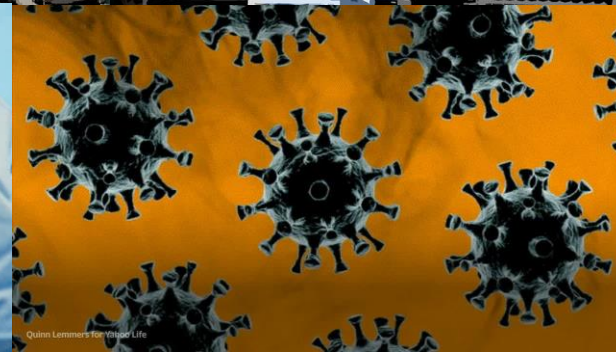
A large, circular, blue ceramic bowl with a cracked surface, featuring prominent yellow-gold repair lines (kintsugi). An inset image shows a close-up of the bowl's rim.



A tall, slender vase covered in a vibrant, multi-colored collage of pop art patterns. The design features various text elements such as "broken pottery", "8,000,000", "JAPAN", "EUROPE", "AFRICA", "GREECE", "AMERICA", "CHINA", and "ASIA". It also includes abstract shapes, a cartoonish face, and a speech bubble with the word "MOM". The colors are bright and saturated, creating a visually busy and eclectic composition.

Bayeux Tapestry

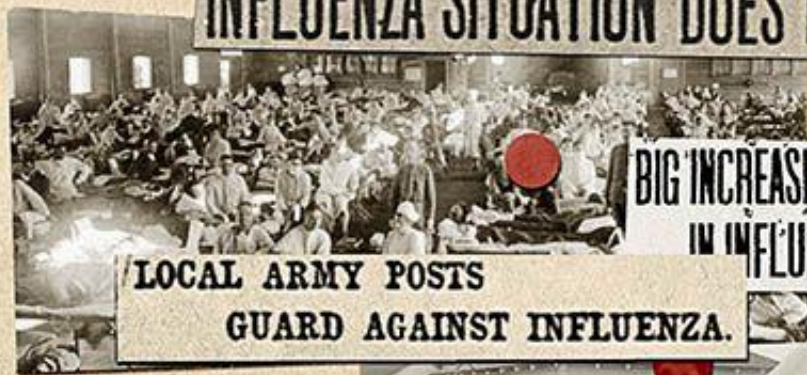




report no cases of influenza. With the situation in the city greatly improved, officers expect another quarantine will

INFLUENZA SITUATION DOES NOT IMPROVE

29,002 CASES IN CAMPS



BIG INCREASE SHOWN
IN INFLUENZA CASES

Rapid spread of Spanish influenza in Dallas was indicated by the reports at the Emergency Hospital yesterday. One hundred new cases were reported.

LOCAL ARMY POSTS
GUARD AGAINST INFLUENZA.

725 NEW CASES REPORTED YESTERDAY BRINGS TOTAL UP TO 3,444 IN DALLAS.

SPANISH INFLUENZA REPORTED IN TEXAS

"SPANISH" INFLUENZA!
Some Facts About It and How to Prevent Its Spread

41 DEATHS UP TO DATE

ORIGINARY CAUSE OF THE SPANISH INFLUENZA epidemic will be the toll of influenza in the United States unless a material check is made on the epidemic that is now covering the country. Estimated deaths will be the toll of influenza in the United States unless a material check is made on the epidemic that is now covering the country. Estimated deaths will be the toll of influenza in the United States unless a material check is made on the epidemic that is now covering the country.

LOCAL ARMY POSTS
GUARD AGAINST INFLUENZA.



FOURTH DEATH REPORTED IN DALLAS, WITH ANOTHER AT CAMP BROWN

100 NEW CASES OF INFLUENZA IN CITY

PREVENTIVE TREATMENT AGAINST INFLUENZA. LOVE FIELD, TEX.

INFLUENZA EPIDEMIC SLOWLY SUBSIDING

Announcement Is Made That Quarantine at Love Field Is Probable Unless Conditions Improve.

TOTAL OF SEVENTY-SIX CASES REPORTED BY PHYSICIANS YESTERDAY.

Twice as many cases of Spanish influenza were reported yesterday at the Emergency Hospital as were reported on either of the two previous days. There were seventy-six cases in all, fifty-two of which were in Oak Creek.

INFLUENZA MAY KILL HALF MILLION PEOPLE





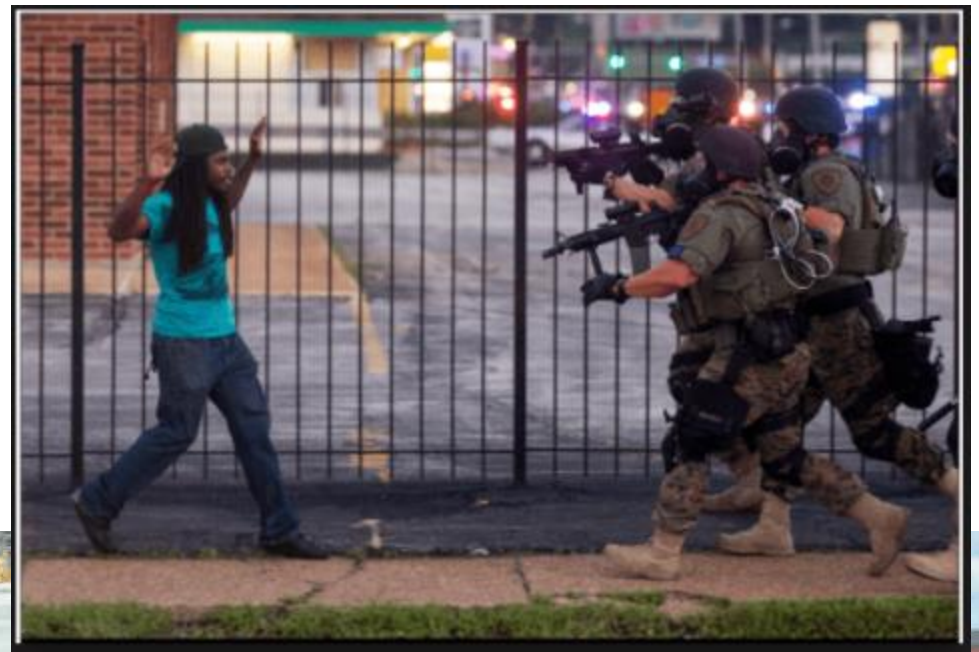
[illegible]





I CAN'T BREATHE





Topic Selection- Be Brave- Be Controversial!

1. **Your research Topic, learn about it, understand it, understand its impact.**
2. **Read the news, online or buy a newspaper! NOT just social media. Fact check your research, watch the news on TV, think about how stories have been edited or softened.**
3. **Your issue should be contemporary and be something that directly affects you or someone you know. You should have an emotional connection to your theme, select something that you feel passionately about.**
4. **It must be possible to complete first and second hand research on your chosen theme.**
5. **You should be able to research and understand the issues in as much depth as possible to ensure your outcomes are meaningful.**
6. **Produce a mini sketchbook on your chosen topic.**



Facts

Statistics

Images

Photos

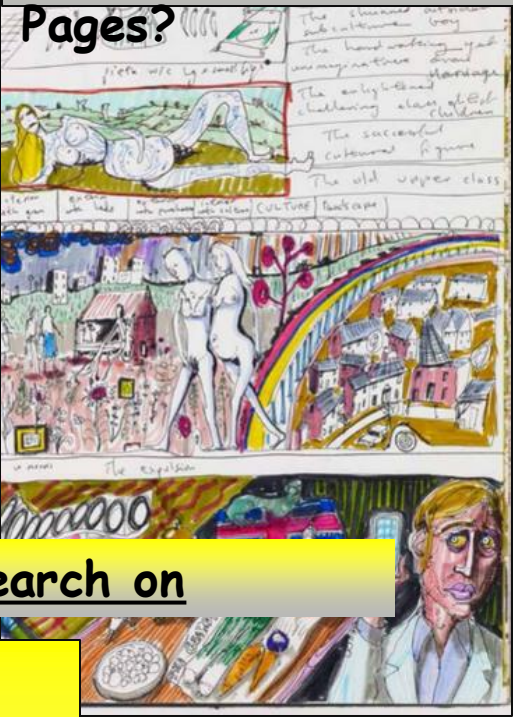
Articles

Opinions



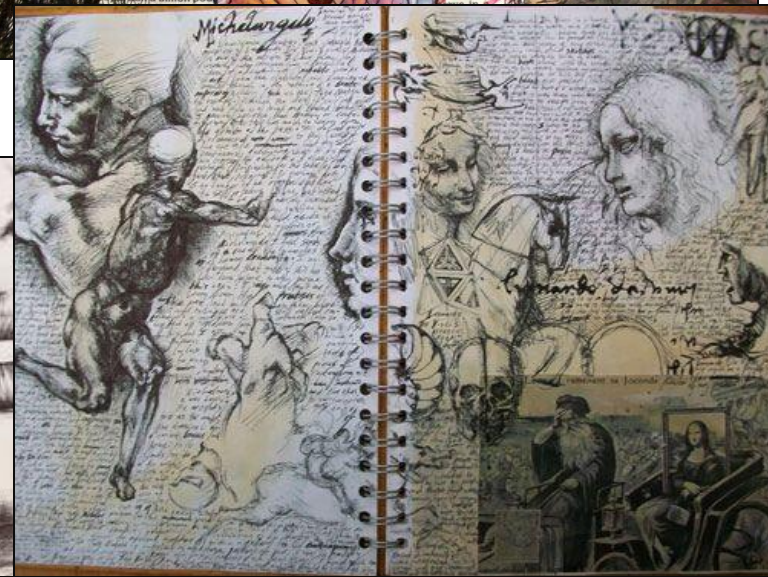
What is successful about these Artists Pages?

Pages?



Complete a Double Page (min) of research on Grayson Perry

1. Include the following elements:
2. Notes about the artist and his work using the guidance sheets.
3. Images of the artists work that you have drawn, painted and sketched.
4. Images working in the style of the artist.
5. Your thoughts and opinions on his work.
6. Present all work creatively to make full, interesting pages.



What would make these Artists Pages more successful?